

KKL1X50T3

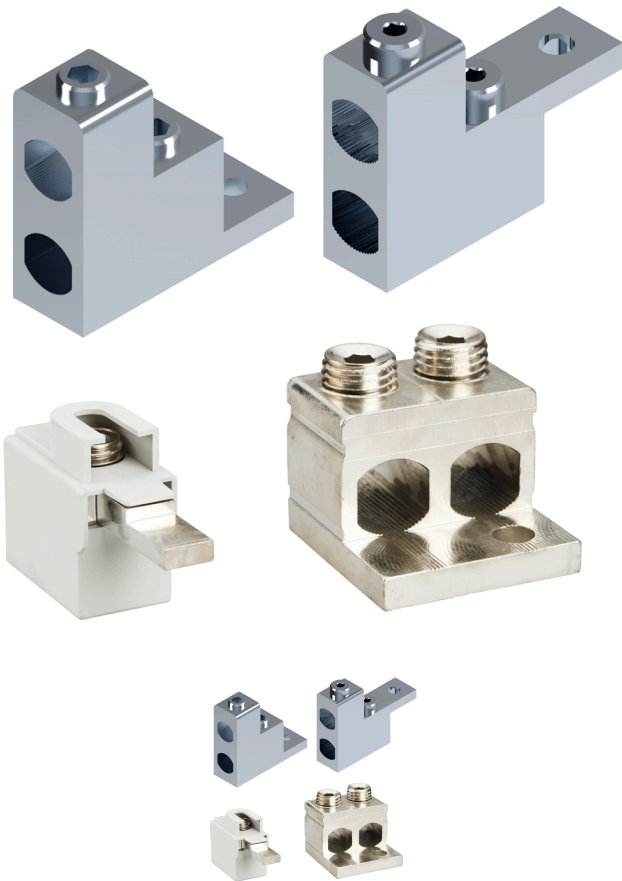
Cable Connectors

- Sales unit = 1 pc
- Suitable for Al/Cu cables
- Material: tin-coated aluminium
- IEC 61238-1 Class A
- Environmentally friendly materials

Conductors per cross section (mm²) table
>>

KKL Installation Instructions >>

Compatibility tables >>



Note: Product images do not represent this product.
Actual product may differ from shown images.

Data subject to change without notice. Always
confirm the data is correct from the seller.

Product details

SKU	KKL1X50T3
Al mm²	16-50
Color	Standard
Cu mm²	2,5-50
E-Number	1942107
EAN	6419410378724
In (Al) (A)	125
In (Cu) (A)	125
Key size	Hex 5
Mounting	Direct
Number of Conductors	1
Package size	12
Torque Al/Cu (Nm)	5 (2,5-16mm ²) / 10 (25-50mm ²)
Un (V)	690
Weight (lb/kg)	0.042 / 0.019

Dimensional drawing

